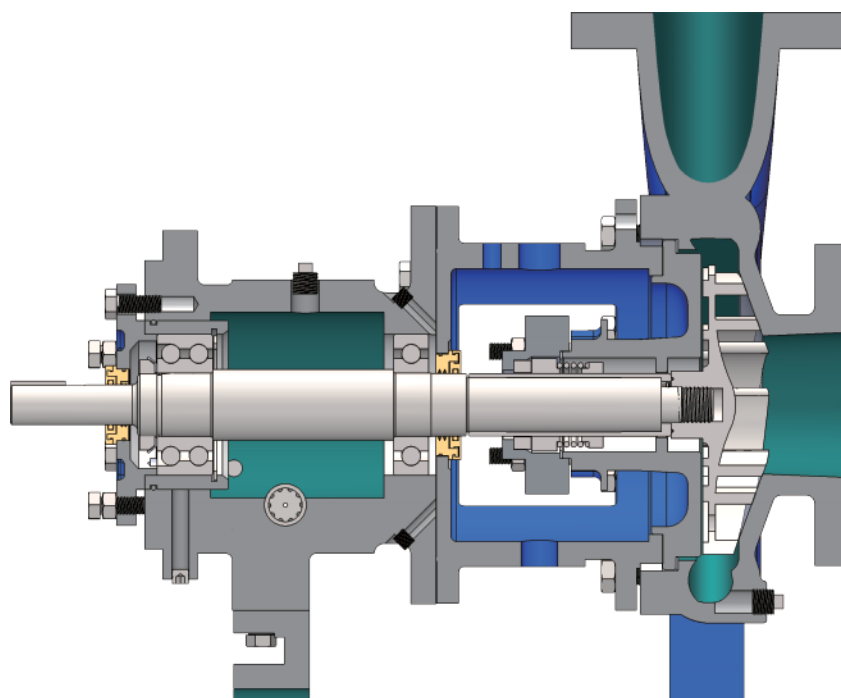
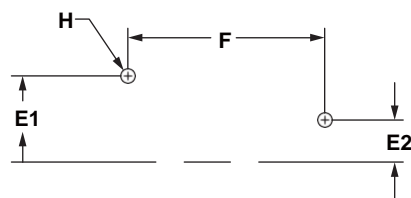
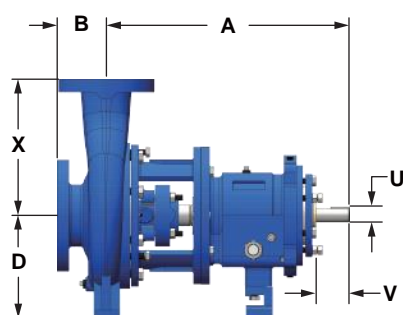




## **GWN-G SERIES 5196 CHEMICAL PROCESS PUMP**



## ▼ OUTLINE DIMENSIONS [ Unit: inch (mm) ]



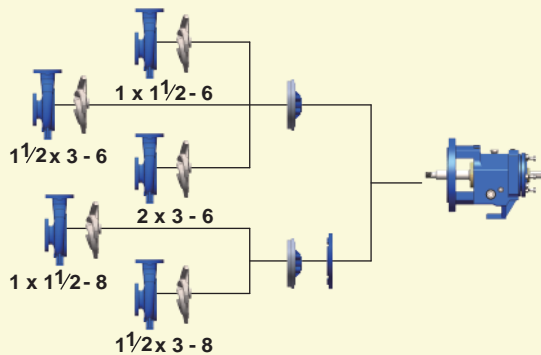
Pump Frame	Pump Dimensions															
	Size					Foot Pattern								Shaft		
	ANSI	DIS	SUC	IMP	X	D	B	A	SP	E1	E2	F	H	U	KEYWAY	V
STN	AA	1	1.5	6	6 1/2	5 1/4	4	13 1/2	3 3/4	4	0	7 1/4	5/8	.875	3/16 x 3/32	2
	AB	1.5	3	6												
		2	3	6												
MTN	AA	1	1.5	8	9 1/2	8 1/4									MTN 1.125	MTN 1/4 x 1/8
	AB	1.5	3	8												
	A60	2	3	8												
	A70	3	4	8												
or	A70	3	4	8G	11		4	19 1/2	3 3/4	4 7/8	3 5/8	12 1/2	5/8			2 5/8
	A50	1	2	10	8 1/2											
	A50	1.5	3	10	8 1/2											
	A60	2	3	10	9 1/2											
LTN	A70	3	4	10	11	10									LTN 1.875	LTN 1/2 x 1/4
	A40	3	4	10H	12 1/2											
	A80	4	6	10	13 1/2											
	A80	4	6	10H	13 1/2											
XTT-N	A20	1.5	3	13	10 1/2	14 1/2	6	27 7/8	5 1/4	8	4 1/2	18 3/4	7/8	2.375	5/8 x 5/16	4
	A30	2	3	13	11 1/2											
	A40	3	4	13	12 1/2											
	A80	4	6	13	13 1/2											
	A90	6	8	13	16											
	A100	8	10	13	18											
	A110	6	8	15	18											
	A120	8	10	15	19											
	A120	8	10	15G	19											

# PRODUCT FEATURES

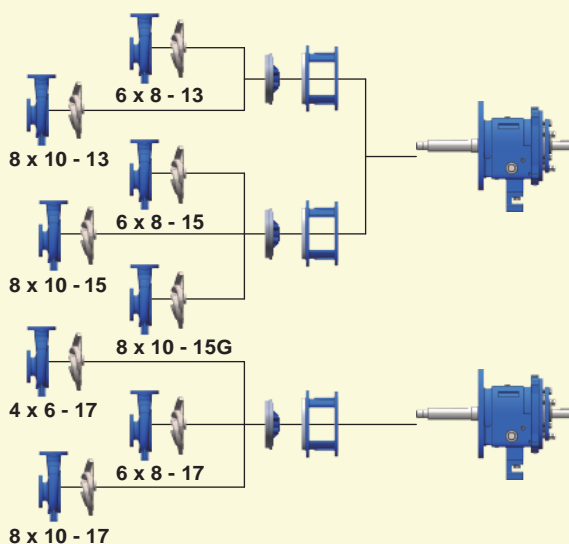
GWN-G series 5196 chemical process pumps comply with ASME/ANSI B73.1M standard. With a maximum capacities of 7000GPM, maximum head of 730 feet, temperatures to 371°C and pressures to 375PSIG, this series pumps are designed for total range of industry services. Besides extended pump life, its' back pull-out design, external impeller adjustment and maximum interchangeability simplify the maintenance. Fully open impeller, full 50/60 Hz coverage and various sizes make hydraulic performance optimum. It is the best choice for chemical, petrochemical, pulp & paper, primary metals, food & beverage and general industries. Both bare shaft pump and pump package unit with base plate and motor are available. Various material constructions can be offered according to requirement.

## ▼ MODEL GWN-G INTERCHANGEABILITY & OUTLINE DIMENSION DRAWING

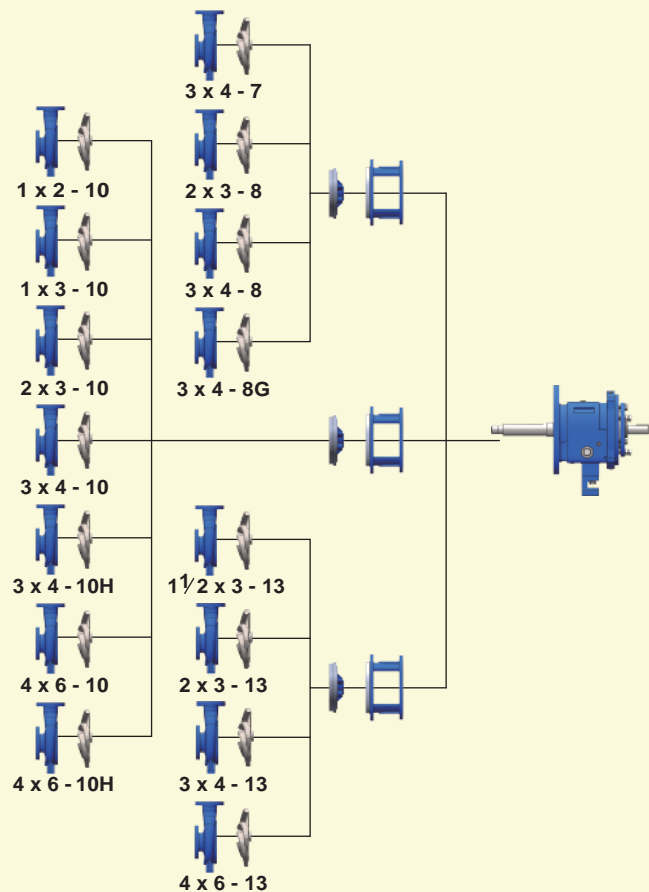
### Model GWN-G STN



### Model GWN-G XLT-N



### Model GWN-G MTN



# • PERFORMANCE CHARTS

